



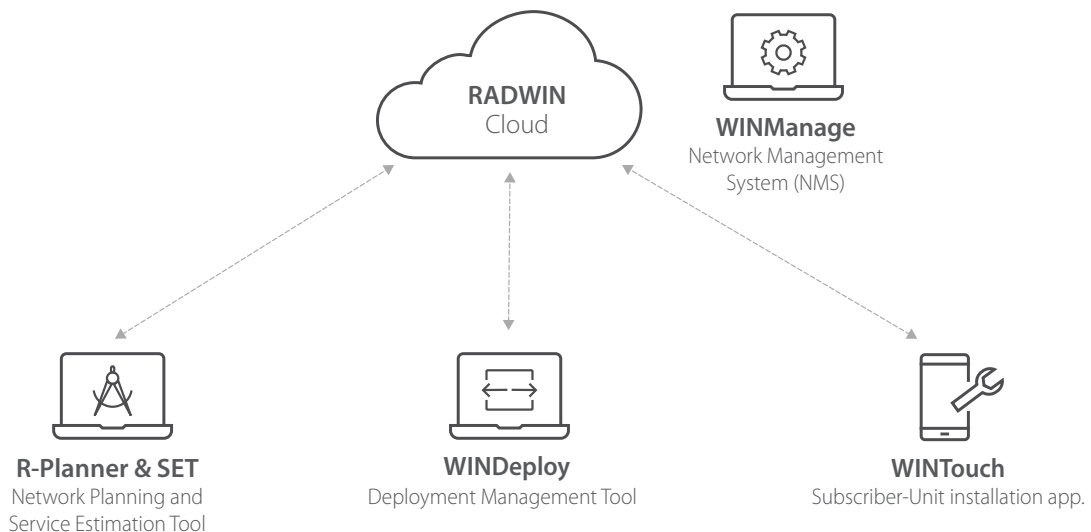
# RADWIN OSS Applications

RADWIN OSS provides a set of operational applications that support the entire network lifecycle, addressing everything from radio planning, network deployment, unit installations, service commissioning, and network maintenance.

## OSS highlights:

- » Simplify end-to-end operations
- » Efficiently manage mass wireless network planning and deployments
- » Guarantee service performance
- » Reduce TCO

## Operations Support Systems deployment cycle





## R-Planner Network Planning Tool

Plan your wireless network radio roll-out for optimal coverage and capacity while minimizing capital and operational expenditure and best utilize spectrum resources.

Thousands of wireless PtP & PtMP networks have been planned and implemented using R-Planner, continually proving tool accuracy.

### Service Estimation Tool (SET)

An integral part of RADWIN R-Planner, SET estimates service availability when on-boarding new customers, utilizing R-Planner coverage maps.



## WINDeploy Deployment Management Tool

Manage and monitor mass deployment projects by importing installation tasks into WINDeploy and dispatching work orders to installation teams via their WINTouch smartphone app. Review Key Performance Indicators (KPIs) of each subscriber unit installation to assure a superior customer service at all times.



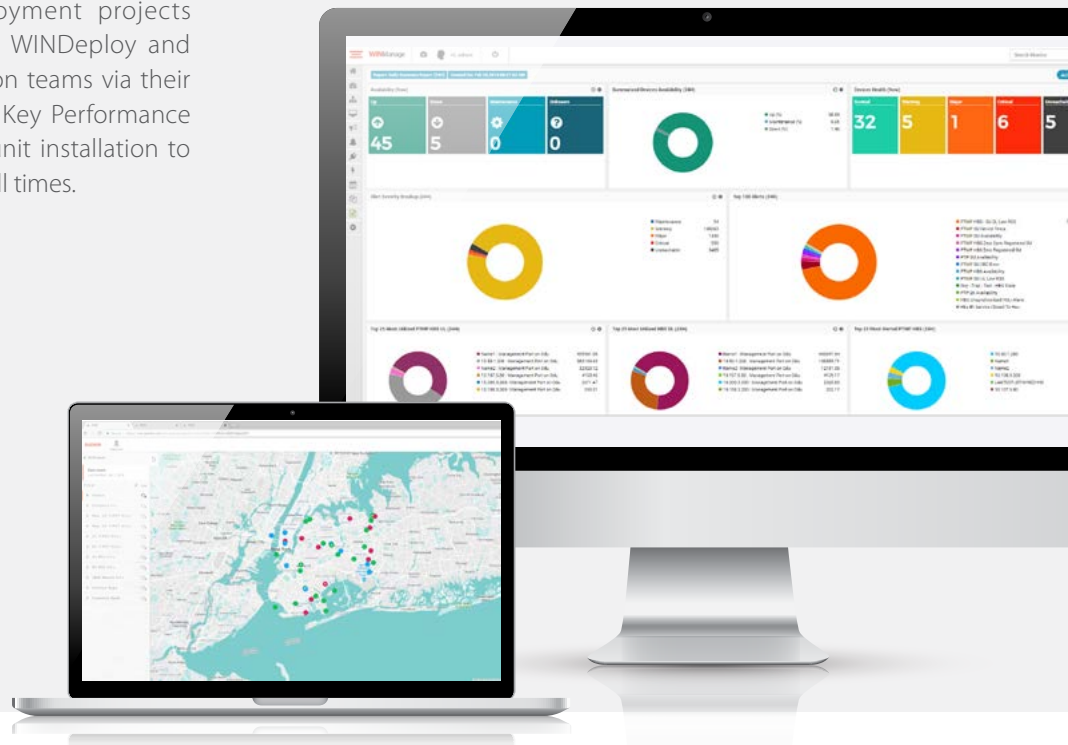
## WINTouch Subscriber-Unit Installation App

Simplify the installation process with automated subscriber unit configuration, antenna alignment and service quality verification. WINTouch communicates over the cloud with WINDeploy to streamline the end-to-end installation process, from work order receipt to installation reporting.



## WINManage Network Management System (NMS)

Manage and monitor online network devices, interfaces and services with a highly scalable, on-premises, web-based system. Using flexible and customizable dashboards and reports, easily perform: network configurations, service provisioning, fault management, performance monitoring and user security management.



RADWIN is a leading provider of Point-to-Multipoint and Point-to-Point broadband wireless solutions. Incorporating the most advanced technologies such as a beamforming antenna and an innovative air interface, RADWIN's systems deliver optimal performance in the toughest conditions including high interference and obstructed line-of-sight.

Deployed in over 170 countries, RADWIN's solutions power applications including backhaul, broadband access, private network connectivity, video surveillance transmission as well as delivering broadband on the move for trains, vehicles and vessels.